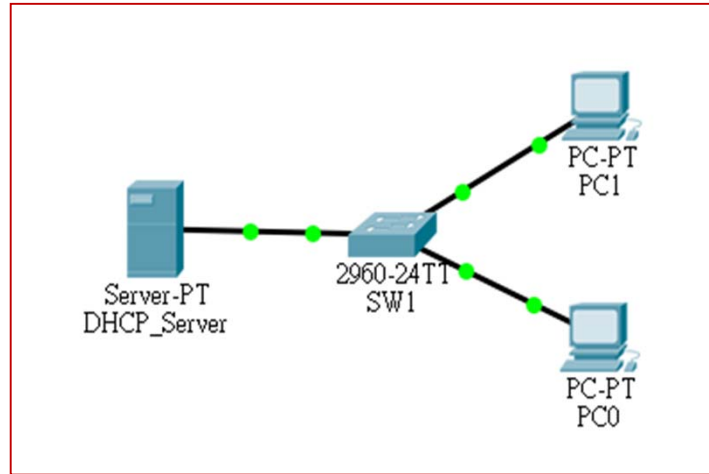


## 5-4-4 DHCP 系統規劃與建置(一)



### ✧ 網路架構



### ✧ 網路環境

裝置	URL 名稱	IP 位址	連接埠口
DHCP Server		192.168.0.253	SW1(fa0/21)
PC0		DHCP 動態分配	SW1(fa0/1)
PC1		DHCP 動態分配	SW1(fa0/2)
整體環境	Gateway = 192.168.0.254、DNS = 192.168.0.252		



## 5-4-4 DHCP 系統規劃與建置(二)



### ✦ DHCP 伺服器設定

Physical | Config | **Services** | Desktop | Programming | Attributes

**SERVICES**

- HTTP
- DHCP**
- DHCPv6
- TFTP
- DNS
- SYSLOG
- AAA
- NTP
- EMAIL
- FTP
- IoT
- VM Management

DHCP **啟動 DHCP 服務**

Interface: FastEthernet0 | Service:  On |  Off

Pool Name: serverPool

Default Gateway: 192.168.0.254

DNS Server: 192.168.0.252

Start IP Address: 192 | 168 | 0 | 1

Subnet Mask: 255 | 255 | 255 | 0

Maximum Number of Users: 240

TFTP Server: 0.0.0.0

WLC Address: 0.0.0.0

Buttons: Add | **Save** | Remove

Pool Name	Default Gateway	DNS Server	Start IP Address	Subnet Mask	Max Use	TFTP Server	WLC Address
serverPool	192.16...	192.16...	192.16...	255.25...	240	0.0.0.0	0.0.0.0

### ✦ 主機設定

#### ◆ DHCP

◆ > **ipconfig** - 查閱IP

◆ > **ipconfig /release** - 釋放 IP

◆ > **ipconfig /renew** - 重新申請 IP

